



Confidentiality:

A Piece of the Matching Puzzle

WRITTEN BY KIMBERLY GROVER, JUDY MCNAUGHTON, AND AMBER TIEMEYER

You may have spent lots of time scouring the MARE photo listings looking to become a forever home for one of the youth who are available for adoption. It can be frustrating and confusing at times when you inquire only to wonder why your family was not selected as a match for the youth. In this article we are going to explore how the matching process works and how confidentiality plays a role.

con·fi·den·ti·al·i·ty

/ ˌkɑnfəˌden(t)ʃHēˈælədē/

noun

1. the state of keeping or being kept secret or private.

Confidentiality is a key piece in the matching process. Diagnoses, behavior histories, past traumas, etc. cannot be shared publicly. Their privacy must be protected. So, the information available on the MARE website may seem to indicate that a youth is a match for your family but when the adoption workers compare your home study to the youth's needs in a family, they can see if there are

mismatched items. For example, if you inquire about a youth who has a particular diagnosis and your home study indicates that you don't feel prepared to parent a child who has that diagnosis, then the workers will let you know your family is not a match.

While maintaining the necessary confidentiality, the MARE Adoption Navigators can help with the matching process especially through the MARE Family Directory. Approved families who join the directory will have hand-picked suggestions from the photolisted youth emailed to them every month by their Adoption Navigator. Navigators can see the confidential information for the youth and compares that to your family's approvals and parenting preparedness, so they are able to make educated suggestions of youth you may be a match for.

Continued on next page.

Summer 2024

In this issue:

Page 1 - Confidentiality

Page 3 - Meet Jesse and Ivy

Page 4 - S'mores in a bag

Page 4 - Calendar of Events

Exclusive sneak peek for this year's Heart Gallery Premiere in this issue!

Learn more about foster care adoption at www.mare.org.



match. This assists the youth's worker in exploring potential matches before the youth is photo listed.

The Adoption Navigators can provide additional resources like assistance with communication delays, information about how to manage inquiry follow-up, and support regarding the various steps in the process to adoption finalization. If you've ever experienced this frustration you may want to consider the assistance of an Adoption Navigator. Contact us on the MARE hotline at 1-800-589-6273 to learn more about the program and if your family might benefit from these services.

If you decide to inquire about one of the youths, your family has the potential to be a very strong match given that all of the criteria are aligned based on the information available.

Adoption Navigators also check for matches between families and youth prior to a youth being photo listed on the MARE website. The Navigators review the profiles and histories and make suggestions to Adoption Workers about registered families that might be a potential

Personalized assistance for you and your family!

Match Support is a statewide service available to you once you're matched with a child from the MARE website and are proceeding with adoption. Program specialists tailor their services to your unique needs, goals, and interests. Specialists are particularly helpful if you're adopting a child transitioning from a residential facility, if you're a first-time parent, or if challenges arise during placement.

- While specialists have the flexibility to assist in several ways, families' top requests often include:
- Providing parenting resources and training options
- Assisting with navigating trauma and developing attachment
- Helping to understand behaviors and brainstorming solutions
- Working with adoption teams

- Locating service providers
- Services are free, voluntary, and last 90 days. They can end early if your needs are met, or an extension can be requested for continued support. Your specialist will have a weekly call and a monthly home visit with you. For your convenience, visits can try to be scheduled with other workers if you'd like. You can also contact your specialist as often as you'd like. They will consistently offer you an empathetic ear and be sure any concerns you have are addressed.

If you'd like a caring, professional partner on your adoption journey, Match Support is here for you! For more information, contact Julie Miller, Match Support Program Supervisor, by calling 734-528-2002 or emailing Julie_Miller@judsoncenter.org.



Meet multi-talented Jesse

Jesse is an incredibly talented, multi-dimensional individual. Jesse is a talented artist; his previous school asked him to create a mural for Martin Luther King Jr. Day. He's an energetic athlete, having participated in baseball, basketball, football, lacrosse, and cheering. Jesse is also a musical whiz as he enjoys playing guitar.

Halloween is his favorite holiday. If everyday was like the spooky, fun vibes of Halloween, Jesse would be phantom in his activities. If Jesse could travel anywhere, he'd choose to go to Fiji. "It looks beautiful," he says, "and I want to see the waterfalls."

If Jesse had three wishes he'd want the ability to create anything he wanted, to go back in time, and to have infinite wishes. But one of his biggest wishes is a forever family who loves the outdoors and being active.



Jesse, C09983

The "Amazing Grace" of Ivy

There's no missing the amazing grace of Ivy. Whether she's dancing or twirling across a carpeted or wooden floor, Ivy finds her own way to have fun. But make no mistake, she loves socializing with others, and they will enjoy doing the same with Ivy. And speaking of "Amazing Grace," perhaps Ivy would imitate a few bars since she loves music and singing.

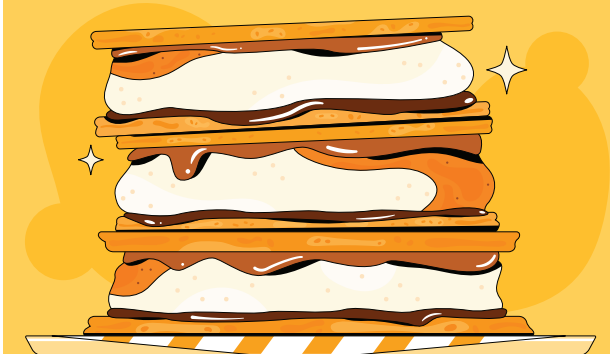
Some of Ivy's other favorite activities are playing with Play-Doh and slime, playing with dolls, playing with a ball and being outside. "She especially enjoys swinging on the hammock swing or tire swing," says one of her close adults. "Ivy enjoys visiting the petting zoo and interacting with many different animals."

You could call Ivy an adventurous girl. "Ivy shows a strength and willingness in learning new skills," says one of her close adults. All in all, that's an amazing combination for a girl who wants and needs a forever family.



Ivy, C010156

Kid's Corner



S'Mores In A Bag

Ingredients:

Single serve bags: Teddy Grahams, Mini Oreos, Fudge striped cookies, vanilla wafers, or chocolate chip cookies

1 Tbsp marshmallow cream

2 Tbsp chocolate chips or mini candy pieces (Reese's, snickers, Hershey)

2 Tbsp mini marshmallows

Instructions:

Cut open a bag of cookies. Take one spoonful of marshmallow cream and stir it around the cookies. Sprinkle in chocolate and mini marshmallows. Enjoy!

Heart Gallery 2024 Exclusive Sneak Peek

The Heart Gallery is a travelling photographic exhibit of Michigan youth waiting for a forever family. The 2024 Heart Gallery premiere is on September 21st in Royal Oak and you're invited! We hope to see you there.



Jaheim, C09549,
Photos by Paul Rains



Calendar

August 27

Waiting Family Forum
Virtual Event

5:30 - 7:30PM

Registration will be available soon on www.mare.org

September 21

Heart Gallery Premiere

EMagine Theater

Royal Oak

11AM - 2PM

For more information, contact jessica_thompson@judsoncenter.org or call 734-528-2070.

Take note: Watch for notices of upcoming Meet & Greet on www.mare.org and on Facebook and Instagram.

MARE contact information

Michigan Adoption
Resource Exchange
3840 Packard Road,
Suite 170

Ann Arbor, MI 48108

Toll Free: 800-589-6273

TTY: 734-794-2984

Fax: 734-528-1695

mare@judsoncenter.org